



Military Relocation Programmatic Agreement Semi-Annual Report July 1, 2021 – December 31, 2021



End to End 12-Stone Latte at the Laguet West Site on Naval Base Guam Munitions Storage Area (2007 Photo)

**Prepared by Camp Blaz PWD
August 2022**

Section I. List all individual projects (as identified in Stipulation V.A) completed within the six-month reporting period that were determined to qualify for findings of No Historic Properties Affected or No Adverse Effect on Historic Properties. This list shall include the date of approval by the Cultural Resource Manager (CRM) and description of the project scope. See Section II for consultation details.

<p>MAMIZU Multiple Vertical Projects Within J-001B APE: J-015 Enlisted Dining Facility; J-018 Police Station; J-023 Bachelor Officer Quarters (BOQ) A; J-032 Bachelor Enlisted Quarters (BEQ) E; J-034: Bachelor Officer Quarters (BOQ) B; J-036 Bachelor Enlisted Quarters (BEQ) C; J-037 Bachelor Enlisted Quarters (BEQ) G; J-038 Bachelor Enlisted Quarters (BEQ) J; J-039 Bachelor Enlisted Quarters (BEQ) K; J-301 3rd Marine Expeditionary Brigade (MEB) Consolidated Headquarters ((RC2021-0851)</p>
<ul style="list-style-type: none"> • 6/9/21: PA Memo Posted with determination of No Historic Properties Affected and a comment period ending July 22, 2021. • A series of consultations followed. • SHPO stated that it could not concur until Navy complied with a list of demands related to PA Memo organization; comments were unrelated to the assessment of effects. • Over the course of consultations, SHPO did not express concurrence. • Determination of No Historic Properties Affected stands. • Note that SHPO comments on the MILCON and MAMIZU Multiple Vertical Projects submittal were identical, as were DON responses.

<p>MILCON Multiple Vertical Projects Within J-001B APE: P-305 Marine 4th Regiment Facilities; P-306 Combat Logistics Battalion – 4 Facilities; P-307 Consolidated Armory Facility; P-310 Infantry Battalion Company Headquarters; P-314 Marine Expeditionary Brigade; P-326 Primary End Item Warehouse; P-802 General Support Base Warehouse; P-803 Individual Combat Skill Training Area (RC2021-0850)</p>
<ul style="list-style-type: none"> • 6/9/2021: PA Memo 1 delivered to SHPO with determination of No Historic Properties Affected and with a comment period ending July 22, 2021 • SHPO’s response (non-concurrence) was identical to that provided for the MAMIZU multiple verticals. • Navy responses were identical and focused on assessment of effects. • Over the course of consultations, SHPO did not express concurrence. • Determination of No Historic Properties Affected stands.

<p>P-187 Brown Tree Snake Exclusion Barrier South (Design Studies (RC 2022-0013)</p>
<ul style="list-style-type: none"> • 10/07/2021: PA Memo 1 delivered to SHPO with determination of No Historic Properties Affected with comment period ending November 21, 2021. • 11/12/2021: SHPO expresses non-concurrence, with reference to “proven inadequacies” of previous surveys, states that surveys did not constitute “reasonable and good faith efforts” and made several recommendations. • Following consultations, including formal meeting to resolve dispute incorporating additional measures in archaeological monitoring work plan, the determination of No Historic Properties Affected stands.

**North Finegayan and Finegayan Forest Enhancement
Sites (FES) PA Memo #1 (RC# 2021-0952)**

The project proposes forest enhancement activities within the North Finegayan and Finegayan Forest Enhancement Sites (FES) adjacent to the Marine Corps Base Camp Blaz (MCBCB) Main Cantonment in Dededo, Guam. The project will enhance disturbed forest through removal of invasive plant and animal species and outplanting of native plant species. To support the enhancement work, limited narrow paths will be cleared to provide irrigation and access for planting and maintenance.

- 07/9/2021: PA Memo #1 submitted with comment period ending in August 23, 2021 and determination of **No Historic Properties Affected**
- 08/10/2021: SHPO did not concur on DON's findings of "No Historic Properties Affected" and expressed concerns regarding archaeological of access paths, outplanting, and identification of historic properties.
- 10/7/2021: DON responded to SHPO concerns and concurred with SHPO on monitoring of access paths, outplanting, and providing a summary archaeological monitoring plan for forest enhancement activities.
- 10/13/2021: SHPO responded to provide further recommendations mainly on the archaeological technician internship.
- 11/12/2021: DON submits summary archaeological monitoring plan (summary AMP) for forest enhancement related projects (covers P-187)
- Following consultations, including formal meeting to resolve dispute incorporating additional measures in archaeological monitoring work plan, determination of **No Historic Properties Affected** stands.

J-200-II: AAFB North Ramp Utilities II – Communications Line (RC2020-0702)

Consultations on this project were covered in previous Semi-annual report; however, consultation continued into the current reporting period. Details of consultation are found in Section II.

- 11/18/2020: Revised PA Memo was delivered with determination of **No Adverse Effect**. Comments were due in late December 2020, in previous reporting period; however, consultation continued into current reporting period.
- 1/19/2021: SHPO provided comments to Navy
- 7/29/2021: Navy response to SHPO comments delivered
 - Following consultations, determination of **No Adverse Effect** stands.

Section II: List all individual projects (as identified in Stipulation V.A.) completed within the six months for which supplemental consultation under this PA has been conducted, including the determination of effect and any mitigation measures identified.

MILCON Multiple Vertical Projects (RC# 2021-0850)
<p>This project will construct eight proposed “vertical” construction, including design studies for Marine 4th Regiment Facilities (P-305), Combat Logistics Battalion – 4 Facilities (P-306), Consolidated Armory Facility (P-307), Infantry Battalion Company Headquarters (P-310), Marine Expeditionary Brigade (MEB) Enablers Facility (P-314), Primary End Item Warehouse (P-326), General Support Base Warehouse (P-802), and Individual Combat Skill Training Area (P-803) at United States Marine Corps (USMC) at NBGTS Finegayan.</p> <ul style="list-style-type: none"> • 6/8/2021: PA Memo #1 submitted with comment period ending in July 22, 2021 and determination of No Historic Properties Affected <ul style="list-style-type: none"> ○ 7/1/2021: Guam SHPO provided comments regarding jargon-heavy language, transparency, and public comprehension, as well as recommendations to move the archaeological inventory listing to a different section of the memo, to direct the reader to applicable sections of semi-annual report, to describe how the DON mitigates adverse effects, and to include a table/matrix with the end of field work date provided to the SHPO and date of SHPO concurrence of each mitigation within the subject APE. ○ 8/26/2021: The DON responded to SHPO’s recommendations stating that: the DON will increase efforts to use plain, jargon-free language in addition to creating a glossary for the public to access; establish a procedure focused on documentation standards and PA memos will incorporate the use of the checklist; information regarding all of the activities, discoveries, and mitigations is provided and updated regularly in the Semi-Annual report; adequate information is accessible by the SHPO, the SHPO Liaison is responsible for the upkeep of the timeline tracker (table/matrix) and should be included in the administrative receipt and transmittal of documents associated with the 2018 resolution, and an additional table or matrix would be a duplicative effort and we instead suggest closer communications amongst staff in addition to the timeline tracker. ○ 9/16/2021: SHPO replied to DON’s response indicating their disappointment regarding the table/matrix but stating that they look forward to the forthcoming changes. ○ Determination of No Historic Properties Affected stands.

MAMIZU Multiple Vertical Projects (RC# 2021-0851)
<p>This project will construct eleven proposed “vertical” construction projects, including design studies for Enlisted Dining Facility (J-015); Police Station (J-018); Bachelor Officer Quarters (BOQ) A (J-023); Bachelor Enlisted Quarters (BEQ) E (J-032); BOQ B (J-034); BEQ C (J-036); BEQ G (J-037); BEQ J (J-038); BEQ K (J-039); and 3rd Marine Expeditionary Brigade (MEB) Consolidated Headquarters (J-301) at United States Marine Corps (USMC) at NBGTS Finegayan</p> <ul style="list-style-type: none"> • 6/8/2021: PA Memo #1 submitted with comment period ending in July 22, 2021 and determination of No Historic Properties Affected • 7/1/2021: Receipt of SHPO comments

- SHPO says it can't complete review of these projects without a table
- SHPO recommends use of terms familiar to the general public, rather than terms specific to historic preservation professionals, such as vertical construction, site integrity, CFR, mitigation, qualifying characteristics.
- SHPO recommends moving the list of references to a separate table to be included as an appendix.
- SHPO recommends that an executive summary of ongoing projects be included in the identification of historic properties section of the PA Memo, with direction to the posted semi-annual report that provides additional information.
- SHPO recommends adding information to the Finding of Effect section that addresses some of the public concerns about how the buildup impacts cultural resources by describing ways DON is mitigating adverse effects.
- SHPO says i will not complete review until they receive a table/matrix that indicates the end of fieldwork notification to SHPO and subsequent SHPO concurrence letter for each area of these projects.
- Without the additional information, SHPO cannot concur
- 8/26/2021 NFM response to SHPO Comments delivered
 - SHPO objection for DON's finding of effect is based on "structure and content" of the PA Memo and indicates desired improvements to documentation, consistent with 36Code of Federal Regulations (CFR) Part 800.11 (d). We have taken action in response to your comments:
 - Increase efforts to use jargon-free language
 - Create a glossary for the public to access (created and subsequently posted on the CRI website)
 - In addition to referring the public to the Semi-Annual reports on the CRI website, where additional information on activities, discoveries, and mitigations are provided and updated; efforts to provide transparency include responses to media requests, site visits by SHPO and legislators and responding to public comments
 - DON committed to providing a checklist focused on documentation standards for use in developing PA Memos (provided as an attachment to the response)
 - DON thanked SHPO for the meaningful comments on improving PA Memos
 - DON determined that adequate information accessible by the SHPO already exists and providing a table or matrix to include end of fieldwork and subsequent concurrence dates associated with the 2018 Resolution would be duplicate effort unnecessary with the frequent and flowing communication between SHPO and DON. However, stronger emphasis will be put on including details on the 2018 resolution efforts as it relates to the documentation standards described in 36CFR800.11(d) and (e).
- 9/16/2021: SHPO responds to DON response:
 - SHPO thanks DON for considering SHPO concerns and recommendations into consideration and looks forward to seeing the changes incorporated into the next round of PA memos.
 - SHPO would like to have seen the table/matrix included, acknowledging its redundancy but seeing it as a failsafe to check for clerical errors
 - SHPO suggests that the issue might be addressed in an amendment to the 2011 PA
 - Following consultation, SHPO does not state concurrence with DOD's determination regarding the project.

- Determination of **No Historic Properties Affected** stands

**P-187 Brown Tree Snake Exclusion Barrier South (Design Studies) PA Memo #1
(RC# 2022-0013)**

This project will conduct design studies to support future construction of an exclusion barrier to limit movement of brown tree snakes, rats, cats, and ungulates such as feral pigs and deer. The project includes access pathways and an irrigation pipeline for natural resources outplanting efforts. There will be gates installed for natural resources personnel to enter for monitoring and propagation of desired species.

- 10/7/2021: PA Memo #1 submitted with comment period ending in November 21, 2021 and determination of **No Historic Properties Affected**.
- 11/12/2021: SHPO did not concur with DON's findings of "No Historic Properties Affected" mainly due to inadequate previous archaeological surveys. SHPO also wanted to confirm archaeological monitoring tasks expected for the project. SHPO recommended the following:
 - 50 cm x 50 cm excavation at location of each 8" borehole
 - Archaeological monitoring of mechanized ground disturbance
 - Requirement that archaeological interns working on the project must have 300 hours of supervised fieldwork or be accompanied by an experienced field tech supervising and training them under an SOI qualified archaeologist
 - Confirm that the monitor will be recording representative subsurface stratigraphy as well as that associated with cultural deposits and features
 - Specify the existing, approved work plan provided by the government containing the precautionary monitoring procedures that are to be followed.
- 12/03/2021 Camp Blaz response to SHPO comments delivered to SHPO
 - Stated that the disturbance created by a 50 cm x 50 cm excavation (2500 cm²) greatly exceeds the disturbance caused by an 8" diameter bore hole (324.3cm²).
 - Given the environmentally beneficial of the conservation projects, DON has determined that information we relied on meets the ACHP guidance for reasonable and good faith identification efforts. Nevertheless, DON is committed to performing archaeological monitoring.
 - DON's Summary Archaeological Monitoring work plan was submitted to SHPO on November 12, 2021.
 - All mechanized ground disturbance will be monitored (refer to work plan)
 - Provided assurance of qualifications of technician interns
 - Regarding recording stratigraphy, refer to work plan submitted Nov 12, 2021
 - Regarding existing work plan, refer to work plan submitted Nov. 12, 2021
 - Following consultation, the determination of **No Historic Properties Affected** stands.

**North Finegayan and Finegayan Forest Enhancement
Sites (FES) PA Memo #1 (RC# 2021-0952)**

The project proposes forest enhancement activities within the North Finegayan and Finegayan Forest Enhancement Sites (FES) adjacent to the Marine Corps Base Camp Blaz (MCBCB) Main Cantonment in Dededo, Guam. The project will enhance disturbed forest through removal of invasive plant and animal species and outplanting of native plant species. To support the enhancement work, limited narrow paths will be cleared to provide irrigation and access for planting and maintenance.

- 07/9/2021: PA Memo #1 submitted with comment period ending in August 23, 2021 and determination of **No Historic Properties Affected**
 - 08/10/2021: SHPO did not concur on DON's findings of "No Historic Properties Affected" and expressed concerns regarding archaeological of access paths, outplanting, and identification of historic properties.
 - 10/7/2021: DON responded to SHPO concerns and concurred with SHPO on monitoring of access paths, outplanting, and providing a summary archaeological monitoring plan for forest enhancement activities.
 - 10/13/2021: SHPO responded to provide further recommendations mainly on the archaeological technician internship.
 - 11/12/2021: DON submits summary archaeological monitoring plan (summary AMP) for forest enhancement related projects (covers P-187)
- Following consultations, determination of **No Historic Properties Affected** stands.

J-200-II: AAFB North Ramp Utilities II – Communications Line (RC2020-0702)

- 11/18/2020: Revised PA Memo was delivered with determination of **No Adverse Effect**. Comments were due in late December 2020, in previous reporting period; however, consultation continued into current reporting period.
- 1/19/2021: SHPO provided comments to Navy
 - Objection to use of "courtesy" for consultation letters
 - Non-concurrence with determination of **No Adverse Effect**
 - Requires re-survey of the project APE and opportunity to review Research Design
 - States that NAVFAC cannot make a determination
 - States that SHPO is always provided with a second PA Memo
 - States that the project runs through several sites that SHPO believes are eligible and were not properly surveyed
- 7/29/2021: Navy response to SHPO comments delivered
 - Apologized for delayed response, as letter had not been routed to Camp Blaz when it arrived during relocation of the environmental office in February
 - SHPO comments were submitted well past the closure of the comment period, comments will be considered recommendations.
 - 2011 PA requires that identification efforts and determinations of eligibility are made consistent with §800.4 and §800.11 and the project will have no adverse effects to historic properties due to the occurrence of Site 66-08-1065, the historic Northwest Airfield, within the APE. Northwest Airfield was subject to prior mitigation that resolved adverse effects to the resource, including the limited construction impacts associated with the narrow J-200-II communication line project corridor that largely utilize previously disturbed and maintained areas.
 - The subject PA Memo has demonstrated that the APE has had numerous past surveys. The results of these surveys can be used here for a determination of effect. In accordance with §800.4(a)(2) and §800.4(b), the DON has reviewed the existing information for the purpose of identifying any historic properties within and adjacent to the APE. Regarding SHPO concerns about potential historic properties

in the corridor, the DON commits to placing extra emphasis on site checks in accordance with the Stipulation VI.F of the 2011 PA.

- DON is acting in accordance with all the measures specified in the 2011 PA, and therefore, we have determined that the project will have **No Adverse Effect** to known historic properties. In the event that previously unrecorded historic properties are identified, the DON will adhere to Stipulation XI of the 2011 PA.
- Following consultations, determination of **No Adverse Effect** stands.

Section III. Additional coordination under this PA initiated (Stipulations I.A and I.E) within the past six months as a result of changes or additions to the Undertaking. DoD shall provide a summary showing the project name, date of adverse effect notification and status of consultation.

There were no consultations due to changes or additions to the undertaking during this reporting period.

Section IV: Summary of progress on the implementation of mitigation measures specified in Stipulations VI, VII and VIII.

General Mitigations Stipulation VI

Stipulation VI.A.1: Mitigation Plans

Mitigation Plans (Data Recovery Plans) were submitted for the following:

- J-755 Urban Combat Training Range at Andersen South (RC2013-1101)
 - 11/3/21 Work Plan for Archaeological Testing and Data Recovery J-755-013 to J-755-018 delivered to SHPO
 - 12/17/21 SHPO provided comments on testing and data recovery work plan (13-18) with multiple pages of comments and a request for a Revised Work Plan addressing SHPO comments.
 - 4/7/2022 Navy responded to SHPO comments and provided a revised work plan (see next reporting period of the Semi-Annual Report)

- P-735 Multi-purpose Machine Gun Range, NW Field (RC2019-0053)
 - 11/22/21 Navy responded to SHPO comments pre-final data recovery work plan
 - 11/22/21 delivered Navy response to SHPO comments
 - 12/10/21 received SHPO response to Navy response to SHPO comments on final work plan in which SHPO reiterates their previous comments that were not addressed.
 - Comments included selection of samples of features to investigate, discussion of what defines a positive shovel test, and use of micromorphology for collecting site formation evidence.
 - 12/13/21 Navy provided the remaining comments to its consulting archaeological firm to provide clarifying detail in future document preparation i.e. data recovery end of fieldwork letter and draft technical report (covered in later Semi-Annual reporting period).

Stipulation VI.A.2: Data Recovery Reports

- No Data Recovery Reports were received during this reporting period. End of Fieldwork reports for individual investigations of Inadvertent Discoveries and Human Remains investigations were provided to SHPO as they were received by Camp Blaz; however, no draft or final technical reports will be completed for J-001B and J-755 has been completed. We anticipate Draft and Final reports for P-735 in the next reporting period.

Stipulation VI.B: Public Education and Interpretation

- No additional educational booklets were produced during the reporting period. Digital copies of existing booklets can be obtained from the Navy Cultural Resources Information website (<https://pacific.navfac.navy.mil/About-Us/Cultural-Resources-Information/Public-Education-and-Interpretation-Series-Booklets/>)
- When you reach the website, click “About Us” to access Cultural Resource information, including opportunities to comment on PA Memos.
- Construction of a memorial monument at the location of burials that were preserved in place was completed at the HR-1 location in J-001B (Sabānan Fadang).
- A location for a marker and artifact display at the location of the Mågua site has been selected; however, installation is pending completion of landscaping.
- Design for an indoor display of archaeological and educational material at the Camp Blaz Visitor Center is proceeding.
- Planning for and design of an outdoor interpretive area featuring artifacts and native plants representing life on the Northern Plateau continues; request for funds has been submitted.

Stipulation VI.D.1: Cultural Resource Awareness

- COVID restrictions remained in effect during the reporting period. No classroom training by Camp Blaz CR staff was permitted; however, voice was added to DVDs containing the presentation. The DVD was provided to contractor’s Environmental Managers, who presented the training to small groups of socially distanced and masked contractors and provided Camp Blaz with rosters of attendees.
- 216 individuals were trained during the reporting period. This is almost double the number trained during the previous reporting period, but much lower than during pre-COVID reports.

Stipulation VI.D.2: Access to Historic Properties on DoD Lands

- The Public Access Plan remains suspended due to COVID restrictions; there were no visits to historic properties on installations during the reporting period. See Section VIII for information on plant collection.

Stipulation VI.F: Professional Oversight

- There are three Secretary of the Interior qualified archaeologists at Camp Blaz.
- Camp Blaz archaeologists also consult regularly with NBG and AAFB Cultural Resource Managers (CRM) and the Joint Region Marianas CRM to ensure oversight of actions and mitigations related to the Marine Corps Relocation. Camp Blaz archaeologists are also in consultation with NAVFAC PAC archaeologists by phone or email daily.
- Camp Blaz archaeologists also conduct site visits to inspect progress, respond to contractor requests for information and report to the Contract Officer’s Representative on any issues.
- Camp Blaz archaeologists also communicate with SHPO and the State Archaeologist regarding discoveries and requests for information.

Stipulation VI.G: Update of Historic Properties Information

- Contracts for archaeological investigations, whether for surveys or data recovery, require that the contractor prepare a new or updated (as appropriate) Guam Historic Property Inventory (GHPI) form for the property to include a NRHP status recommendation. GHPI numbers are issued by SHPO. P-608 Survey Report included new site forms and revised site forms for known sites based on survey results. SHPO has provided GHPI numbers for those sites.

Guam-Specific Mitigations (Stipulation VII)

Stipulation VII.B.1: Signage at South Finegayan

- While Relocation actions (housing) are no longer proposed at South Finegayan, the requirement to rehabilitate the interpretive sign at the South Finegayan Latte Stone Park remains in the 2011 PA.
 - The interpretive signage will incorporate information obtained by a 2016 NBG investigation of the features around the standing latte set.
 - There is also opportunity to manage this requirement with other interpretive needs or initiatives beyond the 2011 PA.
 - Plans for the interpretive signage and rehabilitation of the area around the latte set including removal of dead trees, grass cutting, etc., have been completed and submitted for approval.

Stipulation VII.B.2: Maintain Access to Southern Mountain Trail

- There have been no actions restricting access to the Southern Mountain Trail.

Stipulation VII.C.2: Assist SHPO with Update of Guam Comprehensive Preservation Plan

- This requirement is to occur at 5-year intervals for the life of the PA.
- 2022 is the next target date for Camp Blaz to assist SHPO with the update of the Preservation Plan that was completed in 2017. The SHPO liaison will play a significant role in this update.

Stipulation IX: Provide SHPO Liaison

- The SHPO Liaison position has been filled by a SOI qualified archaeologist.
- The position is funded through the Center for Environmental Management on Military Lands (CEMML).
- The Liaison is stationed full-time at SHPO, increasing the number of SOI qualified archaeologist at SHPO to three. Over the course of this requirement, Navy has provided multiple liaisons (the first was a Navy employee, which SHPO considered to be a conflict of interest); the next two were hired through the University of Colorado under a program for Center for Environmental Management on Military Lands (CEMML). The first did not meet the SOI qualifications and the contract was not renewed. While efforts to refill the liaison position were in progress, a SOI-qualified Camp Blaz archaeologist assisted SHPO. The second CEMML liaison was well-qualified, but resigned after the first year.

Stipulation VII.C.2: Prepare/Update Stand-alone Guam Synthesis

- The initial Synthesis, published in 2019, consisted of a two-volume set that started after Guam SHPO completed the Historic Preservation Plan in 2017.
- The Synthesis update is funded for 2022 and will provide an opportunity to include new information from military relocation investigations, particularly those on the Northern Plateau.
- Camp Blaz intends to provide a public summary of the updated Synthesis in response to requests from several individuals. This will be posted on the Navy CRI website.

Stipulation VII.C.3: National Register of Historic Places (NRHP) Nominations

This stipulation requires that DoD prepare at least two NRHP nominations per year for historic properties on DoD land.

- Camp Blaz is taking measures to improve the routing systems for our nominations at both Navy and Air Force.
 - Three nominations were included in a contract awarded in FY2020
 - COVID prevented the consultant from coming to Guam
 - Two nominations were proposed for 2021.
 - Schedule was revised to accommodate later fieldwork for both 2020 and 2021 nominations (total of 5)
 - Fieldwork was completed and the 2020 nominations are currently with Camp Blaz for review.
- Planning for 2022 Nominations is currently in progress (details in table).

STATUS OF NRHP NOMINATIONS AS OF DECEMBER 2021 (highlighted sites have Brochure/Pamphlet already)

Calendar Year	Property Name	Status
2012	Talisay (66-02-2366)	Listed in NRHP
2012	Tumon-Maui Well (66-01-2278)	Listed in NRHP
SHPO	Mahlac Pictograph Cave (66-02-1985) By SHPO	Listed in NRHP
2013	Dobo Springs Latte Set Complex (66-02-0151)	With HQ for delivery to Keeper
2013	North Field AAFB	North Field nomination was prepared by NAVFAC PAC and NAVFAC MAR at recommendation of AAFB CRM, based on HAER completed as partial mitigation of adverse effects on North Field. Nomination was placed on hold by AAFB.
2014	Dãdi Beach Defensive Bunker (66-02-1303)	With HQ for delivery to Keeper
2014	Pãpa'etnon (66-02-2330)	Pending routing through JRM
2015	Maulap River Complex (66-02-1978)	With HQ for delivery to Keeper
2015	Sagãyan Atmagosa (66-02-2337)	Routing through NBG
2016	Torres Farmstead (66-08-2717)	With AAFB, we are inquiring about status.

2016	Tarague Well #4 (66-07-1586)	With AAFB, we are inquiring about status.
2017	Songsong Må'gas (66-09-1935) & Guekon Yu'us (66-09-1940)	Routing through NBG
2018	Arizona Room, AAFB (66-07-1588)	Completed SHPO review, pending selection of traditional name
2018	Straggler's Cave AAFB (66-08-1515)	Completed SHPO review, with Camp Blaz for routing to NAVFAC HQ
2018	Block Rock Shelter, AAFB (66-08-1516)	Completed SHPO review, with Camp Blaz for routing to NAVFAC HQ
2019	Pugua Point site (cut steps) proposed by SHPO	Completed SHPO review, with Camp Blaz for routing to NAVFAC HQ
2019	Pugua Point site (Site 13) proposed by SHPO	Completed SHPO review, with Camp Blaz for routing to NAVFAC HQ
2019	JRM Conference Table Constructed for a March 1967 conference between civilian and military leaders of US and South Vietnam and recently featured in a documentary hosted by JRM PAO and Guam Parks and Historic Sites historian.	Completed SHPO review, with Camp Blaz for routing to NAVFAC HQ
2020	66-02-2341 contains two latte sets and has a Spanish component	Field work completed in 2021 due to COVID delays. Received Draft Feb 2022; internal review at Camp Blaz
2020	66-02-2344 contains two latte sets and two associated quarries	Field work completed in 2021 due to COVID delays. Received Draft Feb 2022; internal review at Camp Blaz
2020	66-02-2339 is a single latte set with associated rock shelter	Field work completed in 2021 due to COVID delays. Received Draft Feb 2022; internal review at Camp Blaz
2021	66-02-2348 is a Latte Period site in Naval Base Guam Munitions Storage Area.	Fieldwork completed; Received drafts March 2022; internal review at Camp Blaz
2021	66-02-2350 is a Latte Period site in Naval Base Guam Munitions Storage Area.	Fieldwork completed; Received drafts March 2022; internal review at Camp Blaz
2022	Camp Blaz is proposing nomination of three sites in the Tarague Embayment, a fourth site at the Live Fire Training Range Complex, plus a Multiple Property Nomination. This is a thematic	Camp Blaz is currently obtaining approval from military leadership.

	<p>nomination for upland agricultural sites, coastal villages and the network of stone lined paths that connect them in the Tarague Embayment. The sites include 66-07-1614, a Latte Period coastal village at Tarague, 66-07-1637, an upland agricultural site, 66-07-1638, a well-preserved section of the network of stone-lined path that connect the agricultural sites with coastal villages and fresh water sources. These sites will be used to develop the context for these and similar sites in the Tarague Embayment. The fourth nomination is a multi-component site near the Known Distance Rifle Range. The site is important for providing early dates that demonstrate pre-latte activities on the Northern Plateau.</p>	
--	---	--

Stipulation VII.C.4.a: Cultural Repository Funding
<ul style="list-style-type: none"> • DON advocated for funding and secured Congressional authorization. Office of Economic Adjustment granted \$12 million to Office of the Governor. • Construction is nearing completion on the University of Guam campus • When the facility is staffed and ready to receive collections, JRM will begin transferring collections to the facility. • Note that the facility is intended to house all Guam collections, not just JRM.

This UOG photograph shows the repository nearing completion at the University of Guam. The Repository, funded by the Department of Defense, is intended to house all of Guam’s archaeological collections in a facility meeting federal standards (36 CFR 79).



Stipulation VII.C.4.b: Museum Complex Advocacy
<ul style="list-style-type: none"> • DON provided a white paper explaining the effort to secure funding and to meet the commitment for advocacy. No federal agency was able to provide funding for a museum complex.

Stipulation VII.D: National Park System on Guam
--

- | |
|--|
| <ul style="list-style-type: none">• No impacts to NPS related to the military relocation have been reported. |
|--|

Stipulation VIII: Tinian Mitigations

- | |
|---|
| <ul style="list-style-type: none">• Tinian mitigations stipulated under the 2011 PA remain on hold. |
|---|

Section V. List projects to be completed in the next reporting period, including the determination of effect and any mitigation measures required.

Note: Projects listed in Section V are anticipated during the next reporting period; however, timing may vary due to scheduling decisions.

H-279 AAFB Housing: Demolition of old housing and construction of new housing in Phases
Previous consultations (October 2015) for H279 addressed effects of demolition and replacement of military housing at AAFB. The project is occurring in phases within the previously consulted on area of potential effect (APE). See update in Section VI (additions to APE).
<ul style="list-style-type: none">• Housing AAFB green box change (H-279) Revised 2015 PA Memo coming for FY23 Phases IV, V and VI

P-103 Water Well Development, AAFB
Prior to design of the well field, more than 1100 acres near the intersection of Route 3, 3A, and 9, were surveyed. Several large sites were discovered. Human remains were encountered at four locations within those sites. The well field was then designed to avoid all known sites, whether eligible or not. Subsequently, constraints placed on the design by re-evaluation of safety arcs at AAFB munitions storage area and at the USGS observatory forced the well field south and west of the original proposed design. The result of the changes reduced the number of wells and the corridor now cuts across an ineligible site.

P-735 Multi-Purpose Machine Gun (MPMG) Range, AAFB survey and data recovery
Camp Blaz conducted an analysis of findings at P-715 (Live Fire Training Range Complex) and at J-001B (Main Cantonment) and developed methods specific to supplemental investigations at P-735. The methods will be employed at P-735 as a result of dispute resolution with the SHPO. The MPMG range extends for a kilometer on the northern plateau overlooking Ritidian. The range crosses two soil/geological formations, with karst in the north and cobbly clay in the south. Appropriate methods for each zone were developed in consultation with SHPO.
<ul style="list-style-type: none">• Draft and Final technical reports are anticipated in next reporting period.

P-745 US Fish and Wildlife Service Building Relocation, Ritidian Unit, Yigo, Guam
<ul style="list-style-type: none">• Consultations between Camp Blaz and SHPO regarding appropriate archaeological investigations for selecting the location for construction will occur sometime within the next reporting periods.• Consultation with SHPO and the Public regarding construction will occur in a future reporting period.

J-014 Physical Training Complex, J-035 Education Center, J-318 Public Works/Maintenance Shops, J-323 Base Motor Pool MAMIZU Verticals on locations prepared for construction by J-001B Utilities and Site Improvements
PA Memo 1 to be submitted in next reporting period

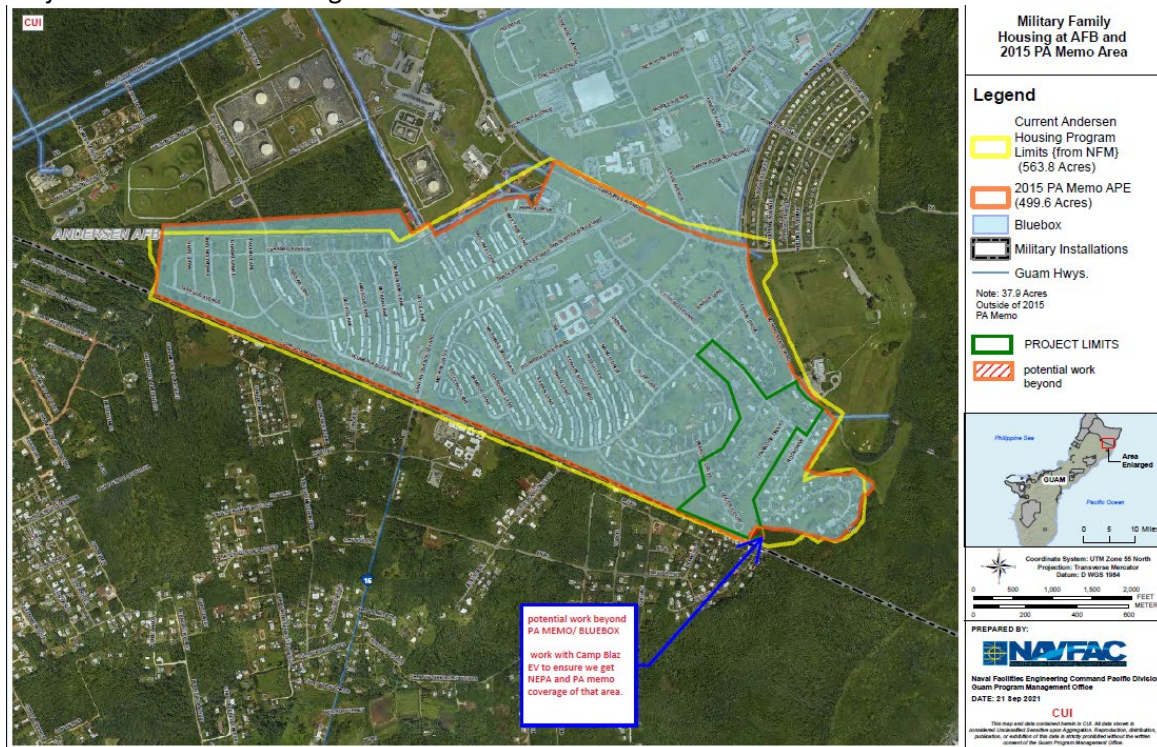
P-309 Ground Combat Element Infantry Battalions 1 & 2 Facilities, P-324 9th Engineer Support Battalion HQ, P-325 9th Engineer Support Battalion MILCON Verticals on locations prepared for construction by J-001B Utilities and Site Improvements

PA Memo 1 to be submitted in next reporting period

Section VI. Include maps showing the project areas and DoD project numbers, as well as any portions of the APE where sensitivity designations have been changed as a result of further identification and evaluation efforts.

NOTE: Regarding changes in sensitivity, results of Camp Blaz' investigations will influence development of new sensitivity maps. Locations that were graded to bedrock, such as J-001B, P-715 and P-735 will be indicated as having ZERO archaeological sensitivity; however, discoveries made in those locations, and at Andy South, will be considered when developing updated maps for adjacent areas on the Northern Plateau.

Project H-279 AAFB Housing Revised PA Memo for Increased APE



AAFB Housing phased demolition and new construction was originally consulted on in October 2015 and since began construction. Late 2021, APE was expanded to accommodate additional small areas around perimeter for utilities related to future phases. PA memo is being prepared and will be submitted during next reporting period.

P-103 Water Well Field Development, Reduced Scope
(Due to Sensitivity of Utilities, Not Shown in Detail)



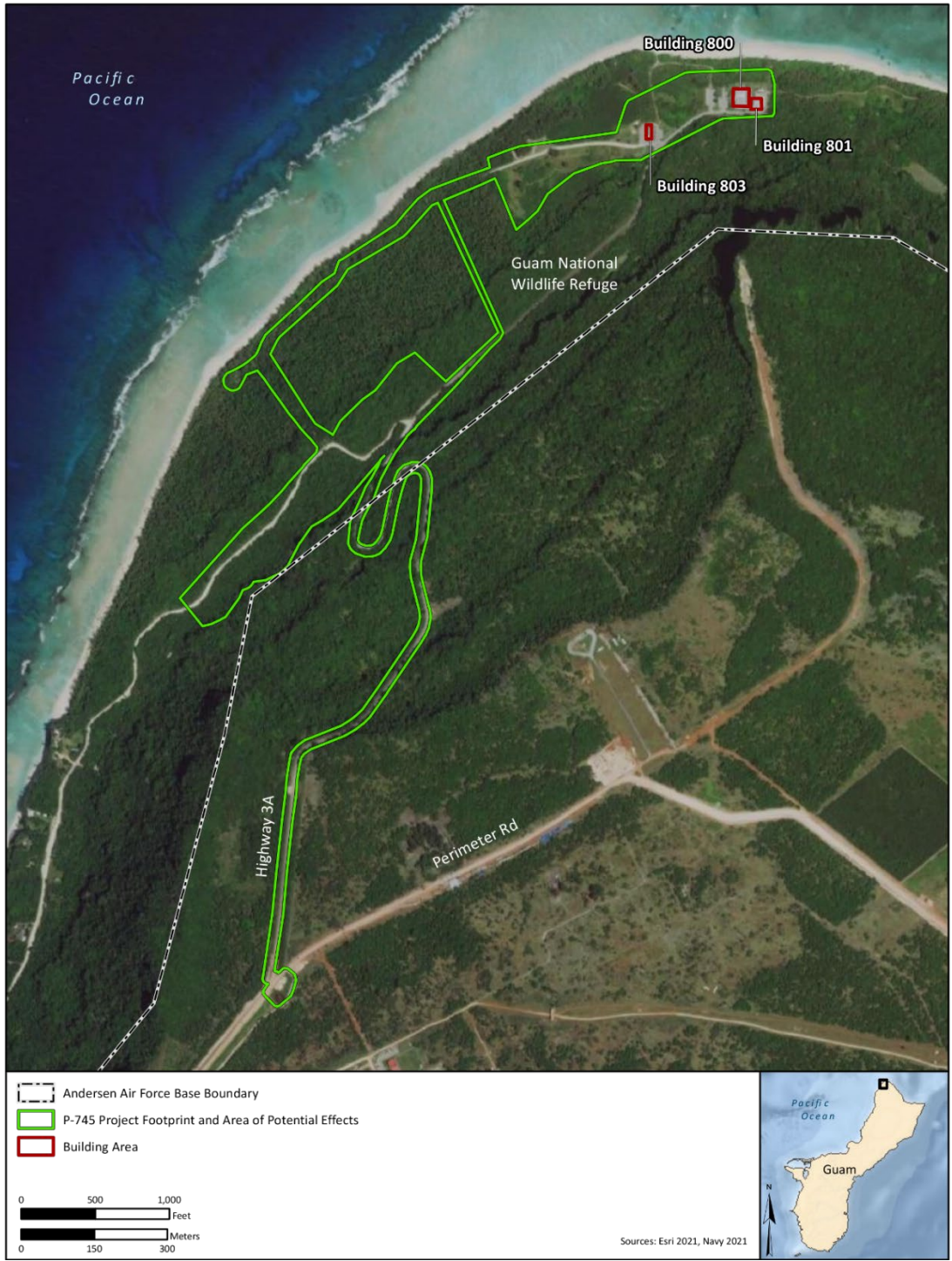
Initially consulted on in 2016, design was amended due to constraints from the north and east, resulting in reduction of scope and preparation of revised PA Memos in 2018 and 2019. Potential new PA Memo will be evaluated if the additional reduction in scope will result in the need for another consultation. The archaeological monitoring plan will be consulted upon prior to start of field work.

P-735 Multi-purpose Machine Gun Range Survey and Data Recovery
Location of Discoveries (Blue Areas are cultural areas subject to data recovery)



Data Recovery Report to be submitted in Next Reporting Period

P-745 Archaeological Surface and Subsurface Survey in Support of MILCON P-745 United States Fish and Wildlife (USFW) Relocation Archaeological Inventory Survey



Camp Blaz will consult with SHPO on appropriate methods for archaeological investigations to be employed for selecting the location for relocation of USF&W facilities. A PA Memo for new construction will follow.

Section VII. Results of all dispute resolution efforts under Stipulation XIII

2018 Resolution Agreement called for archaeological monitoring of the large horizontal projects at J-001B (Utilities and Site Improvements, Main Cantonment), P-715 (Live Fire Training Ranges, AAFB), J-755 (Urban Combat Training Complex at Andersen South), and P-103 (Water Well Development, AAFB). Archaeological monitoring has concluded at P-715; monitoring continues at J-755 and J-001B and will soon commence at P-103. The 2018 Resolution Agreement also committed DoD to including information about all historic periods in reports, whether or not those periods were represented in the findings. The 2018 Resolution Agreement also committed DoD to work with SHPO to develop new archaeological standards specifically for Guam. This third item has not been completed.

2020 Resolution Agreement extended the monitoring requirement to P-735 (Multi-purpose Machine Gun Ranges, AAFB). In addition, supplemental survey of the area was required, using experience-based methods derived from studies or findings at P-715 and J-001B. Monitoring continues as grading progresses. The full text of the 2018 and 2020 Resolution Agreements appears at the end of this section.

Results of Archaeological Monitoring (Discoveries made after consultations had concluded and pre-construction surveys and data recovery had been completed) are compared in the following table. Discoveries were made during monitoring of vegetation removal, grubbing and grading. Note that pre-construction surveys were conducted in jungle conditions prior to selection of locations for facilities. Monitoring was conducted during clearing and grading, when surface visibility was near 100%.

Project	Pre-Construction Surveys		Archaeological Monitoring During Construction	
	Sites	Human Remains	Sites	Human Remains
P-715	20 eligible sites were in project footprint. 14 were data recovered; six were avoided and preserved in place by relocating a road.	none	6 new areas	9 locations with human remains, one (1) of which contained multiple burials
P-735	14 sites with 5 eligible and 9 not eligible. 4 eligible sites were data recovered; the other eligible site was NW Field and	none	Special methods for re-survey and monitoring were developed for karst and soil areas under	1 location with human remains was discovered; SOP for investigation was completed.

	was mitigated by archival research.		the 2020 Agreement: North: no sites South: 6 sites with 3 eligible and with data recovery completed. Boundary of 3 previously documented sites increased.	
P-745	Project planning start remains pending as of June 2022.			
J-001B	Total of 19 sites With 9 eligible and data recovered.	One human bone fragment recovered during data recovery	11 new discovery areas, some will merge into larger sites	26 locations contained human remains; 9 of these locations contained one or more burials
J-755	26 historic resources with 22 of these (primarily foundations) located within three large post-WWII facilities (housing area, MARBO and Army Hospital. 3 are eligible pre-contact artifact scatters; 1 is an unevaluated structure, 1 (977) is a previously recorded artifact scatter that could not be located.	none	21 new archaeological areas, some of which will merge into larger sites, others have been determined not eligible.	13 locations with human remains, 4 locations contain one or more burials
P-103	Project started June 2022 with monitoring; no discoveries have been made at the time of this report.			

2018 Dispute Resolution Agreement



DEPARTMENT OF THE NAVY
JOINT REGION MARIANAS
PSC 455, BOX 211
FPO AP 96540-1000

5090
Ser J00/0220
July 2, 2018

Ms. Lynda Bordallo Aguon
State Historic Preservation Officer
Guam Historic Resources Division
490 Chalan Palasyo
Agaña Heights, Guam 96910

Dear Ms. Aguon:

SUBJECT: DON RESPONSE TO SHPO OBJECTION TO ACTIONS CARRIED OUT
IN THE IMPLEMENTATION OF PROGRAMMATIC AGREEMENT
PURSUANT STIPULATION XIII - RESOLVING OBJECTIONS

This responds to your letter dated May 24, 2018, expressing objections to Department of Navy (DON) actions under the 2011 Programmatic Agreement Among the Department of Defense, the Advisory Council On Historic Preservation, the Guam State Historic Preservation Officer, and the Commonwealth of the Northern Mariana Islands State Historic Preservation Officer Regarding the Military Relocation to the Islands of Guam and Tinian (hereinafter referred to as "PA"). As discussed during our June 22, 2018 meeting, Joint Region Marianas (JRM) proposes to resolve the objection consistent with the consensus recommendations resulting from consultations with the parties to the PA.

As discussed in our consultation meetings seeking to resolve this dispute, SHPO's objection focuses on three (3) interrelated topics: archaeological identification efforts, historic context in reports, and report quality. DON has consulted with SHPO and the parties to the PA to reach clarity on these matters. In our June 15, 2018 meeting with the PA parties, DON and the PA parties resolved two of the objections. DON reaffirmed its commitment to quality improvement of reports delivered to SHPO in response to objection 3d. The parties agree that timely input from SHPO is essential in producing better reports.

DON also committed to including language in our future contracts that will ensure archaeological contractors mention all periods of Guam's history as named in the Guam Historic Properties Inventory (GHPI) regardless of presence or absence of archaeological remains in the field in response to objections 2; 2a; 2b. We understand SHPO's desire to use the same naming conventions for time periods in order to ensure specific periods of history are not overlooked.

5090
Ser J00/0220
July 2, 2018

In response to objections 1; 1a; 1b; 1c; 1d; 2c; 2d; 3; 3a; 3b ;3c, DON also recognizes SHPO's interest in adopting Guam-specific archaeological survey standards that differ from the Secretary of Interior (SOI) Standards for Identification routinely followed by DON. DON is committed to working with SHPO to develop alternate archaeological survey standards that are appropriate for Guam. In the interim, DON will continue to meet SOI standards in the manner agreed upon in Stipulation IV (Identification and Evaluation of Historic Properties) and Appendix F (ACHP's Recommended Approach for Consultation on Recovery of Significant Information from Archaeological Sites) of the 2011 PA.

During our June 22, 2018 meeting, the State Archaeologist proposed a compromise that will allow the DON to address SHPO concerns. This compromise calls for two (2) archaeological field technicians to conduct monitoring of initial ground disturbance (initial stump removal, dozing, and grading activities) within the four construction areas (J-001B; P-715; P-103; J-755) listed in the SHPO's formal objection dated May 24, 2018. Archaeological field technicians will report to a supervisor who meets Secretary of the Interior Standards for Archaeology. The additional archaeological monitors will observe ground clearing activity and report discoveries to DON archaeologist. DON archaeologist notify SHPO of new discoveries in accordance with Stipulation XI (Discoveries and Emergencies) of the 2011 PA. DON will provide SHPO with details regarding the archaeological monitoring of initial ground disturbing activities in the form of an Archaeological Monitoring and Discovery Plan (AMDP) as requested by SHPO. Monitoring activities will also require a field log and a field report at the conclusion of initial ground disturbance at a given Area of Potential Effect (APE). Further, Naval Base Guam will provide Guam SHPO and staff installation access in order to conduct site inspections and monitoring as requested by SHPO, consistent with mission security and safety. The inspections will follow the established rules under the Defense Biometric Identification System DBIDS system.

Additionally, consistent with Stipulation VI.F., DON will continue periodic archaeological monitoring by Secretary of the Interior qualified archaeologists within historic properties. Monitoring will continue at random intervals throughout the day. DON will continue to provide cultural resource awareness training to all personnel associated with construction activities. These personnel have and will continue to report

5090
Ser J00/0220
July 2, 2018


all potential cultural resources to Navy archaeologists who will investigate the notifications as per Stipulation XI (Discoveries and Emergencies) of the 2011 PA. This stipulation ensures that in the event previously unknown archaeological sites are discovered and are not accounted for in an archaeological monitoring plan, then:

1. Any activities within the immediate area will be halted, and reasonable measures will be taken to avoid or minimize impacts to the discovery pending further review under subpart 2 of this Stipulation.


2. The DoD archaeologist will evaluate the discovery to assess potential effects. DoD will determine what actions can be taken to resolve adverse effects, if any, and notify the appropriate SHPO and ACHP within 48 hours.

DON appreciates the opportunity to reach consensus among the PA parties to resolve this objection. Mr. Shawn Arnold is my representative for this consultation should you have any further questions, he can be reached via email at william.arnold@fe.navy.mil or phone at 671-349-1104.

Sincerely,


S. S. CHATFIELD
Rear Admiral, U.S. Navy
Commander

Concurred with,


LYNNA B. AGUON
Guam State Historic
Preservation Officer

2020 Dispute Resolution Agreement



DEPARTMENT OF THE NAVY
JOINT REGION MARIANAS
PSC 455, BOX 211
FPO AP 96540-1000

5860
Ser J00/ 0636
16 Oct 20

Mr. Patrick Lujan
State Historic Preservation Officer (SHPO)
Guam Historic Resources Division
490 Chalan Palasyo
Agaña Heights, GU 96910

Hafa Adai Mr. Lujan:

SUBJECT: RESPONSE TO SHPO OBJECTION TO ACTIONS CARRIED OUT IN THE
IMPLEMENTATION OF THE 2011 PROGRAMMATIC AGREEMENT (PA)
PURSUANT TO STIPULATION XIII

Please find enclosed our Resolution Agreement concluding the Stipulation XIII process for MILCON P-735 Multi-Purpose Machine Gun Range. I appreciate the opportunity to reach consensus with you with the assistance of Ms. Katherine Kerr from the Advisory Council on Historic Preservation and with the participation of the 2011 Programmatic Agreement (PA) Parties.

I am confident this agreement for MILCON P-735 will result in our mutually-desired outcome of taking greater precautions in light of data obtained from MILCON P-715 Known Distance Ranges project. I look forward to continued cooperative efforts for the greater good of our island community and our nation. Si Yu'us Ma'ase.

Sincerely,

A handwritten signature in black ink, appearing to be "J. V. Menoni", written over a circular stamp or mark.

J. V. MENONI
Rear Admiral, U.S. Navy
Commander

Concurred with,

PATRICK LUJAN
Guam State Historic Preservation Officer

Enclosure 1. MILCON P-735 Resolution Agreement

**MILCON P-735 RESOLUTION AGREEMENT
BETWEEN
COMMANDER, JOINT REGION MARIANAS (JRM)
AND
GUAM STATE HISTORIC PRESERVATION OFFICER (SHPO)**

I. Background

The State Historic Preservation Office (SHPO) corresponded with Joint Region Marianas (JRM) on July 30, 2020 expressing objections to Department of Navy (DON) actions under the 2011 Programmatic Agreement (PA) Among the Department of Defense, the Advisory Council on Historic Preservation (ACHP), the Guam State Historic Preservation Officer, and the Commonwealth of the Northern Mariana Islands State Historic Preservation Officer Regarding the Military Relocation to the Islands of Guam and Tinian (hereinafter referred to as "PA"). The SHPO's objection specifically refers to cultural resource investigations for the proposed construction of the Military Construction (MILCON) P-735 Multi-Purpose Machine Gun Range project at Northwest Field, Andersen Air Force Base.

MILCON P-735 is a separate project from those included in the JRM-SHPO July 2, 2018 Resolution Agreement (Ref: 5090 Ser J00/0220) i.e., J-001B, J-755, P-715, and P-103. As of September 11, 2020, neither P-735 nor P-103 is under construction; construction at J-001B, P-715 and J-755 are underway.

The DON's pre-construction surveys identified many archaeological sites in areas directly and indirectly impacted by construction associated with the future Mason Live Fire Training Range Complex. Of those sites, 14 were within the P-715 and P-735 range footprints and impacts were mitigated prior to construction by data recovery archaeological excavations, as stipulated in the PA.

Archaeological monitoring of construction for P-715 has resulted in discoveries of seven archaeological areas and nine areas with non-burial context human skeletal remains. DON has synthesized information from these discoveries and analyzed data to develop appropriate archaeological methods for P-735. The DON's consideration included the relationship of site discoveries to the geology and soils found at the sites, distribution of artifacts and amount of prior disturbance. P-735 consists of two soil types: the southern portion of the range consists of cobbly loam, much of which has experienced disturbance in the past. The northern portion of the range consists of heavily weathered limestone rock outcrop, typically tower karst (also referred to as karrenfeld). The northern area shows little previous disturbance, which is mostly restricted to an existing road through the area. Based on consultations with Guam SHPO and other Parties of the 2011 PA as part of the Stip. XIII process, the DON commits to measures detailed below to resolve the SHPO's objections.

Enclosure (1)

II. Supplemental Archaeological Measures

Based on the DON's analysis of predictive factors from previous investigations at P-715 regarding distribution of artifacts and sites, two different archaeological survey approaches shall be implemented by JRM for areas solely within the P-735 project area; one for the northern karst area and another for the cobbly loam area.

1) Northern Karst Area

The DON shall perform pedestrian surveys within the karst area in the form of parallel transects spaced 10 meters apart. Due to the difficulty of terrain, transects may deviate due to unacceptable risks defined by EM385-1-1 Safety Manual. The general nature of the risks and hazards, including representative photographs of such conditions, shall be included in the corresponding survey report. Archaeologists shall inspect the area for presence of rock shelters and other pre- and post-Contact site types. Archaeologists shall employ "opportunistic" shovel testing, that is, placing screened shovel tests in soil pockets among the karst, if such soil deposits are encountered, and if there is some indication that cultural deposits might be present. If potential sites are encountered, they shall be flagged for additional investigation and a 30-meter radius buffer shall be established around each discovery. Global Positioning System (GPS) coordinates shall be collected, enabling relocation of the area for the following phase of investigation.

Site boundaries shall be determined by placement of close interval (5-meter) shovel tests in cardinal directions from the positive test pit (or beyond the outermost test pit of a cluster), if soil is present; otherwise, the boundary shall be determined by visual inspection of bedrock. The 30-meter buffer can be reduced to a 15-meter buffer after potential site boundaries are established.

Upon discovery of potentially-eligible sites, the DON shall consult with SHPO and ACHP in accordance with PA Stipulation XI, Discoveries and Emergencies. The DON shall accommodate a 10-business day review period for plans to resolve adverse effects. JRM shall seek SHPO concurrence to the greatest extent practicable without diminishing the DON's authorities under the 2011 PA, the National Historic Preservation Act and other applicable federal laws respecting the protection of historic properties.

2) Southern Cobbly Loam Area

Previous investigations demonstrated that most sites occur in the cobbly loam areas where important information can be obtained from artifact distributions and from truncated subsurface features, such as cooking pits. Survey and monitoring in the southern area shall be carried out by the DON in phases:

a. Phase 1: Archaeologists, assisted by Munitions and Explosives of Concern (MEC) technicians, shall establish a 15-meter shovel test grid across the site. Shovel test pits shall be 50 centimeter (cm) in diameter. MEC technicians shall ensure that shovel test

locations are clear of unexploded ordnance (UXO) to maximum initial depth (e.g. 15 cm), the depth beyond which additional MEC support shall be required. Upon completion of the grid, archaeologists shall dig screened shovel tests at each location on the 15-meter grid, with small deviations to avoid unacceptable risks defined by EM385-1-1 Safety Manual. The general nature of the risks and hazards, including representative photographs of such conditions, shall be included in the corresponding survey report. Positive shovel tests shall be flagged, GPS coordinates shall be recorded, and a 30-meter buffer shall be established around the positive test pits and around inconclusive test pits (those that need to be dug deeper than initial depth). The DON shall provide an end of fieldwork letter to the SHPO once Phase 1 is complete.

b. Phase 2: Vegetation clearing for pedestrian and equipment access may begin with the presence of archaeological monitors outside of buffered areas that are pending further investigation. Archaeologists shall work to determine site boundaries within the investigation areas, placing closer interval (5-meter) shovel test pits beyond the positive test pits (or beyond the outermost positive test pit of a cluster, if applicable) to establish a site boundary. Two negative shovel test pits at 5-meter intervals along a close interval transect shall be considered the boundary of the site in that direction along that transect. The DON shall provide an end of fieldwork letter to the SHPO two weeks after Phase 2 is completed and followed by a report.

c. Phase 3: Upon establishing the site boundary, the buffer around the site shall be reduced to 15-meter radius and additional areas shall be released for construction. Archaeological monitors shall be present during construction. One or more monitors (qualified archaeological technicians) shall be present throughout the site on a roving basis. A detailed description of archaeological monitoring in relation to construction work sequence shall be included in the research design. The DON shall provide a monitoring report to the SHPO once all initial ground disturbance is completed.

Upon discovery of potentially-eligible sites, the DON shall consult with SHPO and ACHP in accordance with PA Stipulation XI, Discoveries and Emergencies. The DON shall accommodate a 10-business day review period for plans to resolve adverse effects. JRM shall seek SHPO concurrence to the greatest extent practicable without diminishing the DON's authorities under the 2011 PA, the National Historic Preservation Act and other applicable federal laws respecting the protection of historic properties.

III. Coordination of Archaeological Monitors and MEC Technicians

The DON shall require MEC technicians to coordinate with archaeological monitors closely during the identification of MEC anomalies to record and evaluate if the anomalies are archaeological in nature. MEC teams shall inform the DON and the archaeological monitor of discoveries of potential artifacts and shall protect all discoveries in place until recorded by the archaeologist and cleared for removal. The information regarding MEC investigation-related archaeological information shall be integrated and incorporated into the

archaeological report. These methods to coordinate MEC requirements shall be laid out in the resurvey plan.

IV. Research Design for Supplemental Surveys

The DON shall develop a work plan for the resurvey of P-735 that is a robust document with a research design instead of a simple statement of methods. The DON shall provide a “Resurvey Plan for MILCON P-735 Multi-Purpose Machine Gun Range” to include this research design with a robust consideration of up-to-date background incorporating all archaeological information recorded to date. The DON shall submit to the SHPO for a 60 calendar day review period this research design prior to construction project award. The extended duration for review is based on the anticipated continuation of interrupted schedules and work backlog due to the COVID-19 pandemic restrictions.

V. Interpretive Signage

The DON shall install a publicly-accessible interpretive sign near the Ritidian Overlook to provide information on the prehistory and history of the surrounding cultural landscape and sites affected by MILCON P-735. The DON shall coordinate the final content and location of the signage with the Guam SHPO prior to installation.

Section VIII. Provide summary data about public access from the Public Access Plan.

COVID restrictions limited access through much of the reporting period; however, the Access Plan Coordinator reported two visits to collect plants:

Nov 4, 2021

2 participants

Requested to harvest local plants.

Taken to Live Fire Training Range.

Dec 10, 2021

3 participants

Requested to harvest Lumot.

Taken to Live Fire Training Range

Information about historic sites available for visits is presented on the Joint Region Marianas website (<https://jrm.cnmc.navy.mil/Operations-and-Management/Public-Access-Plan/>). To schedule a visit to one of the historic sites or to schedule visits by traditional healers and herbalists for the purpose of collecting medicinal plants from the installations, contact Frank Alig, Access Plan Coordinator at: Franklin.Alig@fe.navy.mil.



Northern Guam Sunrise. Photo by Camp Blaz Natural Resources Team

APPENDICES

APPENDIX A: TABLE OF ARCHAEOLOGICAL SITE DISCOVERIES (POTENTIAL HISTORIC PROPERTIES)

APPENDIX B: TABLE OF DISCOVERIES OF HUMAN SKELETAL REMAINS

APPENDIX A: TABLE OF ARCHAEOLOGICAL SITE DISCOVERIES (POTENTIAL HISTORIC PROPERTIES)

DATE	DISCOVERY (AREA) NUMBER	POTENTIAL ARCHAEOLOGICAL AREA, DESCRIPTION UPON DISCOVERY <i>Note: All discoveries are flagged/fenced, notifications are sent to appropriate authorities, with construction paused on in the immediate vicinity of the archaeological find (construction work continues elsewhere).</i>
MILCON P-715		
3/19/2019	P-715-001	Surface scatter of Latte Period ceramics at NE corner of KDRR discovered during pre-clearing recon of area
5/8/2019	P-715-002	Ca. 400 Latte Period ceramic sherds in stump pull in SE corner of KDRR near a previously data recovered site
6/3/2019	P-715-003	Large surface artifact scatter running SW to NE across KDRR
6/12/2019	P715-004	Small area with artifact scatter, including lusong (mortar) and 100+ ceramic sherds located in the range road between pistol range and MRFR
7/16/2019	P-715-005	Latte Period ceramic scatter including rim sherds, an extension of a previously data recovered site 66-08-2530 in MRFR
7/29/2019	P-715 Areas 5A and 5B	Areas in SE and SW sides of MRFR. Variety of surface artifacts and dark stains assumed to be indications of subsurface cooking pits
10/15/2019	P-715-006	Possible fire feature, later ruled out.
MAMIZU J-001B		
12/5/2018	J-001B-001	Archaeological surface scatter and possible cooking pits
1/21/2019	J-001B-002	Archaeological surface scatter, stone tools, ceramics suggest potential prehistoric habitation site. Presence of late 19th century bottles and ceramics
5/23/2019	J-001B-003	Immediately adjacent to north and east boundaries of 66-08-2303 (Magua Settlement Site) and are almost certainly part of that sites. Features (probable cooking pits) are visible in both areas.
5/29/2019	J-001B-004	
6/3/2019	J-001B-005	Dark soil feature (possible cooking pit) located some distance east and north of 66-08-2303; not geographically part of the Magua site. Included in notification to SHPO for 003 and 004.
7/18/2019	J-001B-006	Latte Period ceramic scatter, lithics (stone tools), fire affected soil, metal, glass, boot sole and boar tooth. Geographically distant and north of 66-08-2303.
8/18/2019	J-001B-007	Latte Period ceramics, lithics and fire affected soil (probable indicators of cooking pits). Located between 66-08-2303 and Discovery Area J-001B-006.
10/2/2019	J-001B-008	Latte Period ceramics, lithics, and fire affected soil. Modern glass present on surface.
6/1/2020	J-001B-009	Area E, surface scatter of 50+ latte ceramic sherds, a broken lusong, marine shell (tridacna) and volcanic stone fragments

8/19/2020	J-001B-010	Surface artifact scatter and three soil stains with fire affected limestone pebbles in an area approximately 30 x 80 meters in Area E.
3/31/2021	J-001B-011	More than 20 features within an area of approximately 100 x 150 meters in the western portion of Area D. Several of the features are black soil stains that contain burned coconut shell, fire affected limestone pebbles, and surface artifact scatters.
MAMIZU J-755		
3/19/2020	J-755-001	Latte Period ceramics, stone tools, slingstone in Convoy Vehicle Operator Course (CVOC) at western end of Andy South
3/25/2020	J-755-002	100+ ceramic sherds in 100 X 20 meter part of perimeter fence corridor in southern Andy South
4/2/2020	J-755-003	Latte Period ceramic scatter and surface stain that may represent combustion feature (CVOC)
5/1/2020	J-755-004	30-40 ceramic sherds, slingstone, pestle and indeterminate lithic fragments (CVOC)
5/4/2020	J-755-005	Latte Period ceramics, slingstone, stone tool fragments, possible latte elements (CVOC)
5/15/2020	J-755-006	Ca. 90 ceramic sherds, two slingstones, groundstone fragment, two features, faunal and human bone (HSR)
5/19/2020	J-755-007	Ca. 50 ceramic sherds, groundstone fragments, slingstone, marine shell (CVOC)
5/28/2020	J-755-008	Latte ceramics, ground stone fragment and soil stain (CVOC)
6/4/2020	J-755-009	30+ ceramic sherds, ground stone fragments, marine shell, flaked stone tool, soil stain (CVOC)
6/10/2020	J-755-010	Dark soil stains, possible lusong fragment, ground stone tool fragments and ca. 30 ceramic sherds (CVOC)
6/10/2020	J-755-011	25+ ceramic sherds, three soil stains (possible features), ground stone tool fragment and marine shell (possible worked tridacna shell) (CVOC)
7/14/2020	J-755-012	Surface scatter of 80-100 ceramic sherds, 7 groundstone tools or fragments and three soil stains (potential features) were found in an 80 x 120 meter area at the SE edge of the hand grenade range.
8/20/2020	J-755-013	Surface scatter of ceramics and lithics in an area 45 x 75 meters (CVOC)
12/15/2020	J-755-014	Approximately 15x20 meters wide consisting of a surface scatter of Latte Period ceramics, marine shells, lithic tool fragment (CVOC)
6/4/2021	J-755-015	Approximately 50x20 meters wide containing at least 4 soil stain features and surface scatter of multiple artifact classes; located south of CVOC
6/22/2021	J-755-016	Approximately 40x20 meters wide containing 2 thermal features, groundstone, and at least 25 pre-contact ceramic sherds; located south of CVOC
8/3/21	J-755-017	Width of corridor (20m) by ca 60 meters known size; contains at least two thermal features thought to represent earth oven and ca. 25 ceramic sherds.

8/21/21	J-755-018	Area is approximately 15 meters X 54 meters containing a surface scatter of stone and shell tool fragments, ceramic sherds and a human bone fragment (HR7).
12/8/21	J-755-019	Dark soil stain approximately 20 meters long running along west perimeter fence corridor. Feature contains pre-contac ceramics and ground stone tool fragments. Archaeological investigations determined that this dark soil is a secondary deposit; however, a combustion feature was discovered in one of the shovel tests placed in the area.

APPENDIX B: TABLE OF DISCOVERIES OF HUMAN SKELETAL REMAINS

DATE	DISCOVERY NUMBER	Potential Human Remains Description Upon Discovery	SHPO Formal Notification
MLCON P-715			
9/20/19	P-715-HR1	Splintered fragments of human humerus, disturbed context of cleared area. Initial screening for preliminary investigation concurred on by SHPO to be performed by P-715 sub-contractor archaeological firm (in scope under data recovery mod). Preliminary investigation identified 22 fragments of HSR in 1 x 1 meter unit. HSR included cranial fragments, mandible fragment and two teeth.	9/25/2019
9/26/19	P-715-HR2	Splintered fragments of human ilium and fibula, disturbed context of cleared area.	9/30/2019
10/2/19	P-715-HR3 P-715-HR4	Two splintered fragments of human tibia, disturbed context of cleared area within same recovery area.	10/9/2019
10/11/19	P-715-HR5	Grid AU106: 26 fragments of HSR found, majority cranial fragments with femur and other long bones	10/18/2019
10/15/19	P-715-HR6	Grid AM116: three long bone fragments	10/18/2019
10/29/19	P-715-HR7	Grid AS112: two long bone fragments	10/30/2019
10/29/19	P-715-HR8	Grid AS 110: cranial and long bone fragments, teeth	10/30/2019
11/15/19	P-715-HR9	P-715-005B: 2 cm x 2 cm cranial vault fragment with smaller related pieces	11/18/2019
MAMIZU J-001B			
1/9/20	J-001B-HR1	Incised tooth was discovered during data recovery in discovery area J- 001B-002. Tooth was found in Grid AG26. Discovery triggered further investigations per procedure agreed upon in consultation with SHPO. The agreed upon standard operating procedures (SOPs) consists of an investigation of a 25 square meter grid (minimum) around the discovery. The grid is expanded as required to demonstrate 2 meters of negative 1 x 1 units in all directions around every discovery. Through these SOPs additional discoveries were made (see below).	January 24, 2020
3/9/20	J-001B-HR2	Grid Q20, within 66-08-2303: cranial fragments, fragments of long bones tentatively identified as radius and ulna.	3/12/2020
3/25/20	J-001B-HR3	Within 66-08-2303: single small fragment of human cranium on graded surface	4/15/20 delay due To COVID
5/29/2020	J-001B-HR1-BR1	While following the SOPs, the archaeologists encountered an in-situ burial. This was designated as Burial 1. Consultation with SHPO resulted in	6/5/2020

DATE	DISCOVERY NUMBER	Potential Human Remains Description Upon Discovery	SHPO Formal Notification
		concurrency to expose, but not remove the remains in an effort to determine age and ethnicity. The mostly intact skeleton was on its back in extended position with the skull approximately toward the south. However, the skull was not present. It had been removed and replaced with a ceramic vessel dating to the Latte Period. The practice of removing the skull and placing an object, typically a stone or vessel, in its place is a Latte Period tradition.	
6/3/20 confirmed 6/4	J-001B-HR4	Grid N19, Data recovery area J-001B-003: single small fragment of human cranium on graded surface	6/9/2020
6/23/2020	J-001B-HR5	Human ulna fragment found in Grid Q17 within 66-08-2303 (Mågua Settlement Site)	7/2/20
7/15/2020	J-001B-HR1-BR2 and BR3	Archaeologists had discovered a pit feature that contained fragments of human bone. Preliminary investigation of the feature determined that it is a pit containing possibly more than one individual that includes a partially in situ juvenile skeleton and a skull. This was designated as Burial 2. Archaeologists encountered an additional set of skeletal remains east of Burial 1 and Burial 2. This set was designated as Burial 3. While the some remains appear articulated it is unclear how many individuals are in Burials 2 and 2. These remains appear partially disturbed, however, they are believed to be related to their original burial context.	7/20/2020
7/17/2020	J-001B-HR1-BR4	Archaeologists discovered additional human skeletal remains in a disturbed context located a few meters north of Burial 3. The remains are incomplete and it is unclear at this time how many individuals are present. These remains are believed to represent a disturbed burial due to their proximity to Burials 1-3. This was designated as Burial 4. SHPO visited the site on July 24, 2020.	7/28/2020
8/10/2020	J-001B-HR6	Human femur fragment found in Grid AH21, located in Area E	8/17/2020
8/18/2020	J-001B-HR7	Human cranium fragment found in Grid AF22, located in Area E	8/24/2020
8/21/2020	J-001B-HR8	Human tooth found in Grid AE22, located in Area E	8/24/2020
9/29/2020	J-001B-HR9	Femur fragment at Area E.	10/1/2020
12/29/20 Confirmed as HSR	J-001B-HR10	Single bone fragment on surface within ungulate fence corridor. Following notification, archaeological investigation (underway as of	1/4/2021

DATE	DISCOVERY NUMBER	Potential Human Remains Description Upon Discovery	SHPO Formal Notification
1/4/21		3/26/21) has discovered additional fragments in the area.	
2/4/2021	J-001B-HR1	Additional human skeletal remains were discovered in a non-burial context while monitoring work for the Sabanan Fadang burial monument.	2/10/2021
4/13/2021	J-001B-HR11	Midshaft long bone and smaller fragments; partial mandible with two intact molars at Area D	4/16/2021
5/13/2021	J-001B-HR12	Human cranial fragment at Area D	5/17/2021
	J-001B-HR-12-BR-1	Primary burial context with only portions of the lower elements of the lower limbs remaining. The human remains appear to be from the same individual. The presence of one potential betel nut-stained tooth, Latte Period ceramics and lithics suggests CHamoru ancestry.	10/13/2021
5/17/2021	J-001B-HR13	Approximately 20 small fragments of humerus at Area D	5/25/2021
5/20/2021	J-001B-HR14	3 small human bone fragments, including an intermediate phalange at Area D	6/1/2021
5/26/2021	J-001B-HR15	Medial femur fragment at Area D	6/1/2021
6/3/2021	J-001B-HR16	Human cranial fragments at Area D	6/3/2021
6/11/2021	J-001B-HR17	Human tibia midshaft fragment at Area D	6/22/2021
6/11/2021	J-001B-HR18	Small human fibula midshaft fragment at Area D	6/22/2021
5/20/2021	J-001B-HR19	Isolated fractured human incisor discovered during wet screening in the lab (post-excavation) at Area D	6/29/2021
5/27/2021	J-001B-HR20	Very small indeterminate bone fragments, including less than 1cm distal phalanx discovered during wet screening in the lab (post-excavation) at Area D	6/29/2021
	J-001B-HR-20-BR-1	Multiple remains, including an adult and sub-adult, within undulating limestone. The presence of potential betel nut-stained teeth, Latte Period ceramics and Tridachna shell, and absence of historic material suggests that the historically-disturbed burial dates to the Latte Period.	9/21/2021
6/2/2021	J-001B-HR21	Isolated human molar at Area D	6/29/2021

DATE	DISCOVERY NUMBER	Potential Human Remains Description Upon Discovery	SHPO Formal Notification
	J-001B-HR-22-BR-1 and BR-2	Burial 1 (12/30/2021): three concentrations of human skeletal remains. Two concentrations were disturbed to the extent that they were not considered to represent in-situ burials. The third, although disturbed, represents a partially in-situ burial. Burial 2 (2/11/2022 SHPO notice via email; hard copy pending): concentrations of human skeletal elements seemingly overlying intact elements in anatomical position, as well as elements in anatomical position which may also be somewhat displaced. There are at least 3 individuals observed.	
7/6/2021	J-001B-HR-23	approximately 50 or more various bone fragments	7/22/2021
8/19/2021	J-001B-HR-24	one (1) human tooth during wet screening of a data recovery unit	8/27/2021
8/24/2021	J-001B-HR-25	one (1) human clavicle during routine monitoring	9/7/2021
	J-001B-HR-25-BR-1	Portions of articulated cranial and thoracic vertebral elements, clavicles, and ribs with associated lower limbs appear to be from one (1) adult individual.	12/2/2021
9/4/2021	J-001B-HR-26	two (2) HSR fragments, specifically proximal ends of a radius and ulna, due northwest of prior discovery Area 3	9/9/2021
MAMIZU J-755			
5/15/20	J-755-HR1	HSR fragments identified in Discovery Area J-755-006	05/21/2020
11/5/20	J-755-HR2	HSR consisting of scapula and femur fragments at CVOC area. Disturbed context.	11/12/2020
1/6/2021	J-755-HR3	Human bone fragments consisting of patellae, scapula, rib, phalange, and 20 small unidentified fragments	1/7/2021
1/13/2021	J-755-HR4	Approximately 25 fragments of human skeletal remains discovered during data recovery investigations Discovery Area J-755-006 (Area 6)	1/20/2021
5/11/2021	J-755-HR4-BR1	While following SOP for HR recovery in non-burial context, archaeologists discovered HR-4 to be an in-situ (primary) burial. Remains consist of articulated leg bones, possibly representing more than one individual and additional fragmented bones that may be associated with the burial	5/13/2021 – SHPO site visit 5/17/2021 – formal letter to the SHPO, including maps and photos
3/15/2021	J-755-HR5	Multiple fragments of human skeletal remains including metatarsal, cranial fragments, teeth and	3/17/2021

DATE	DISCOVERY NUMBER	Potential Human Remains Description Upon Discovery	SHPO Formal Notification
		fragments of long bones	
8/18/2021	J-755-HR6	Human cranial fragment discovered in Area 16 (southern perimeter fence corridor.	8/27/2021
8/24/2021	J-755-HR7	Probable human femoral fragment discovered in southwestern perimeter fence corridor.	8/27/2021
8/26/2021	J-755-HR8	Fragmentary human skeletal remains found in Discovery Area 17.	9/9/2021
10/15/2021	J-755-HR9	Fragmentary human skeletal remains found in Discovery Area 17.	10/25/2021
MAMIZU J-006			
3/19/2019	J-006-HR1	Fragment of human femur discovered in fill	3/19/2019
4/1/2019	J-006-HR2	Fragment of human clavicle discovered in fill	4/3/2019
4/16/2019	J-006-HR3	Human femur fragment discovered in fill	4/18/2019
5/9/2019	J-006-HR4	Human long bone fragment discovered in fill	5/10/2019
MLCON P-103			
10/7/2013	P-103-HR1	In-situ human remains were discovered in burial context during shovel testing, exposed in effort to determine age and ethnicity in consultation with SHPO, but not removed, preserved in place. Determined to be Latte Period adult.	10/08/2013
10/8/2013	P-103-HR2	Disarticulated human skeletal remains (tarsals) were encountered during shovel testing near HR-1, test was expanded in effort to determine if other bones were present but no other bones were found. Bones were reburied where found per consultation with SHPO.	10/9/2013
Oct 2013	P-103-HR3	Human skeletal remains (adult Latte Period individual of moderate stature) were discovered in burial context during shovel testing. Consultations with SHPO resulted in reburial without removal.	Oct 2013
Oct 2013	P-103-HR4	Fragmentary remains of adult Latte Period individual were discovered during shovel testing. Remains were buried in place per consultation with SHPO.	Oct 2013
PRE-CONSTRUCTION ARCHAEOLOGICAL SURVEY AND SUBSURFACE INVESTIGATIONS IN SUPPORT OF J-001B			
N/A	J-001B-site 2303 Initial	Laboratory Analysis Determinations Surface collection: adult frontal bone (1 fragment) Trench 1, F26: adult forearm and humerus	Report Jan 2017

DATE	DISCOVERY NUMBER	Potential Human Remains Description Upon Discovery	SHPO Formal Notification
	investigations	fragments (3 fragments) Trench 3, F27: long bone shaft fragment (1 fragment)	
N/A	J-001B-site 2305 initial investigation	Laboratory Analysis Determinations F6: Forearm and humerus fragments (3 fragments)	Report Jan 2017
8/14/2016	J-001B Site 2307	EU1/F1: Field discovery of fragment of human clavicle	8/17/2016
N/A	J-001B-Site 2308 initial investigation	Laboratory Analysis Determinations F1: Adult human long bone fragments (19 fragments)	Report Jan 2017
MILCON P-735			
8/28/2021	P-735-HR-1	74 probable human skeletal remains from a shovel test pit associated with archaeological survey. Preliminary analysis identify some of the probable human remains to be from an ulna, cranial vault, and at least two from forearm mid-shafts within disturbed soils.	8/30/2021